

ABN<sup>®</sup>



LONDON+BOMBAY





S. NO: 101

CODE: LONDON - 1



S. NO: 102

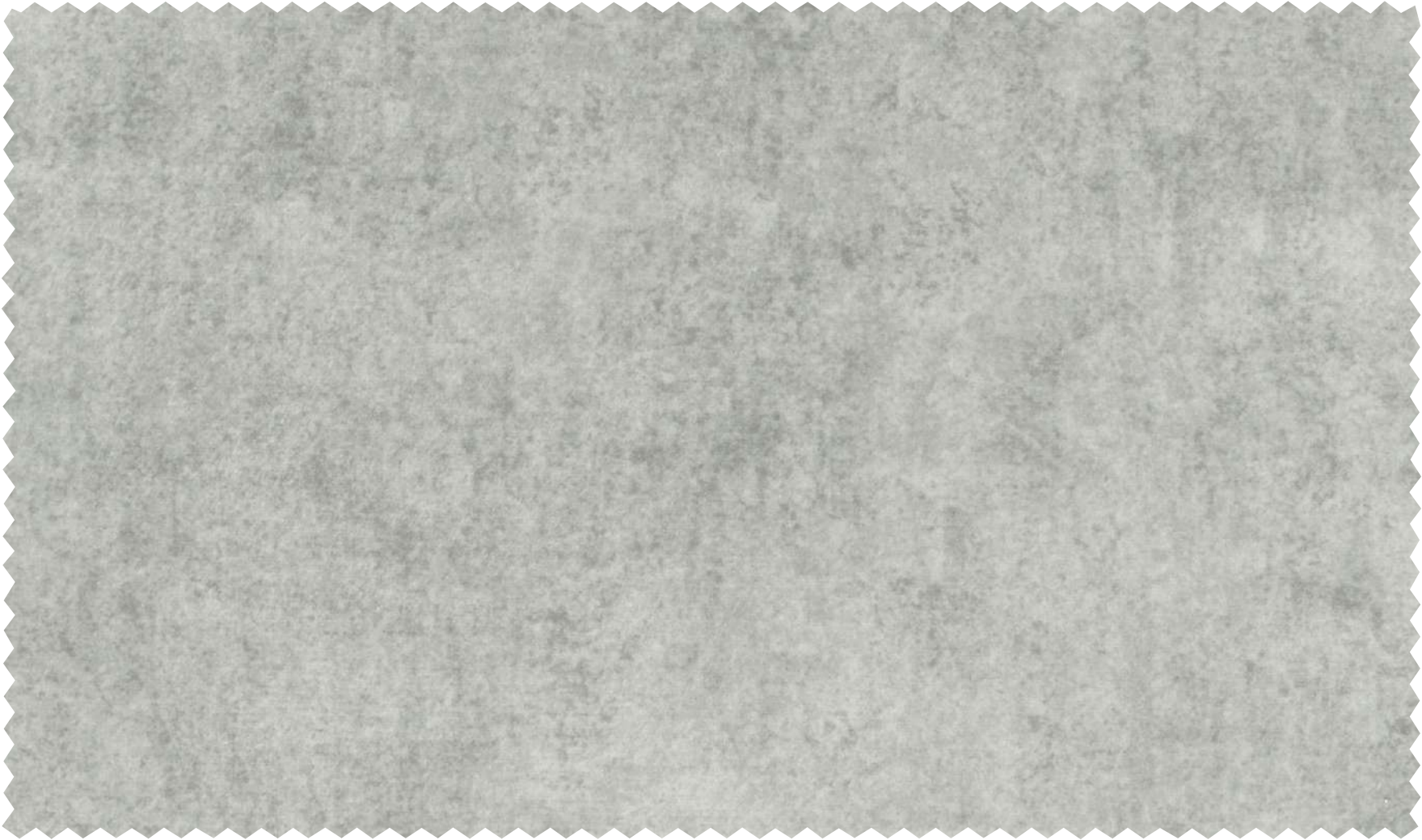
CODE: LONDON - 2



*ABN*®

LONDON + BOMBAY





S. NO: 103

CODE: LONDON - 3



S. NO: 104

CODE: LONDON - 4





ABN<sup>®</sup>

LONDON + BOMBAY





S. NO: 105

CODE: LONDON - 5



S. NO: 106

CODE: LONDON - 6





S. NO: 107

CODE: LONDON - 7



S. NO: 108

CODE: LONDON - 8



# LONDON + BOMBAY







S. NO: 109

CODE: LONDON - 9



S. NO: 110

CODE: LONDON - 10





S. NO: 111

CODE: LONDON - 11



S. NO: 112

CODE: LONDON - 12





S. NO: 113

CODE: LONDON - 13



S. NO: 114

CODE: BOMBAY B - 5





S. NO: 115

CODE: BOMBAY B - 3



S. NO: 116

CODE: BOMBAY B - 10





S. NO: 117

CODE: BOMBAY



S. NO: 118

CODE: BOMBAY B - 13





S. NO: 119

CODE: BOMBAY B - 14



S. NO: 120

CODE: BOMBAY B - 15





S. NO: 121

CODE: BOMBAY



S. NO: 122

CODE: BOMBAY B - 16



LONDON+BOMBAY



S. NO: 123

CODE: BOMBAY B - 17

*ABN*<sup>®</sup>









BOOK CRAFTED BY



*ABN*<sup>®</sup>

## LONDON + BOMBAY

DESIGN	WIDTH	GSM	COMPOSITION	END-USE
LONDON	54"	360	100% POLYESTER	 
BOMBAY	54"	360	100% POLYESTER	 

- We do not accept responsibility for any stain resulting from inappropriate use, chemical cleaning or additional impregnation.
- Test results were gathered from various samples therefore represents average indicative values.
- Discoloration caused by clothing fabrics such as jeans does not represent a material defect.
- Minor colour deviation within permissible industrial tolerance standard within lot to lot fabrics should be acceptable

colors shades may slightly vary from dye lot to dye lot

### WASHING INSTRUCTIONS

